

## NIHR ARC South London's Board

The Board is chaired by Dr Leonie Penna, chief medical officer (King's College Hospital NHS Foundation Trust). It normally meets quarterly. The Board includes representatives from member and partner organisations, local groups and the public, and ARC South London's programme team.

### Members of the Board:



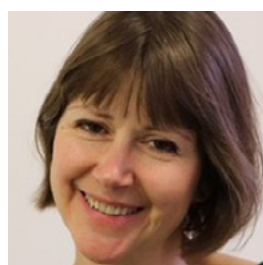
**Rachel Allen (executive)**  
director of the Institute for Medical & Biomedical Education, St George's, University of London (representing ARC South London's capacity building theme)



**Rishi Das-Gupta (board)**  
chief executive, Health Innovation Network



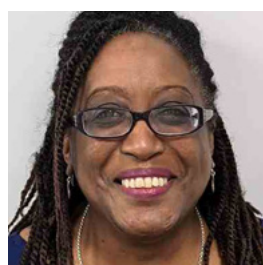
**Sabrina Bajwah (board)**  
clinical senior lecturer, King's College London, and honorary consultant in palliative care, King's College Hospital NHS Foundation Trust



**Zoe Lelliott (board)**  
co-deputy director, NIHR ARC South London and director of King's Improvement Science



**Kate Blake (board)**  
director of research and development strategy, Guy's and St Thomas' NHS Foundation Trust (representing Guy's and St Thomas' NHS Foundation Trust)



**Michele Harris-Tafri (executive)**  
communications co-lead, King's College London



**Ray Chaudhuri (board)**  
professor of movement disorders and neurology, King's College London and King's College Hospital NHS Foundation Trust, and diversity and inclusion representative



**Irene Higginson (board)**  
professor of palliative care, King's College London and director of the Cicely Saunders Institute (ARC South London research about palliative and end of life care and representing King's College University Hospital NHS Foundation Trust)



**Mary Chambers (executive)**  
professor of mental health nursing, Kingston and St George's, University of London (representing ARC South London's patient and public involvement theme)



**Jenny Higham (board)**  
principal, St George's,  
University of London and  
professor of obstetrics and  
gynaecology (representing  
St George's, University of  
London)



**Josephine Ocloo (executive)**  
senior researcher in the  
Centre for Implementation  
Science at King's College  
London and the equality,  
diversity and inclusion Lead  
for the ARC South London.



**Ruth Hutt (partner)**  
director of public health,  
Lambeth Council



**Leonie Penna (board)**  
Chief medical officer,  
King's College Hospital  
NHS Foundation Trust  
(representing King's College  
Hospital NHS Foundation  
Trust) chair of the Board



**Rashmi Kumar (board)**  
chair of ARC South London's  
Involvement Advisory  
Group, public member,  
trustee of Lambeth Patients  
and Public Participation  
Group (PPG), actively  
engaging with Primary  
Care Networks



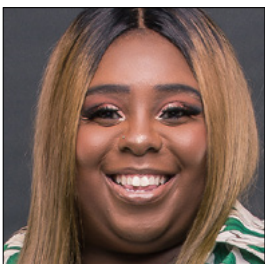
**Mariana Pinto da Costa  
(board)**  
consultant psychiatrist,  
South London and Maudsley  
NHS Foundation Trust  
(SLAM), and senior lecturer,  
King's College London



**Matthew Maddocks (board)**  
co-deputy director, NIHR  
ARC South London



**Beverley Randall (board)**  
community organisation  
member, programme  
manager at Mosaic  
Clubhouse, a mental health  
charity in Lambeth



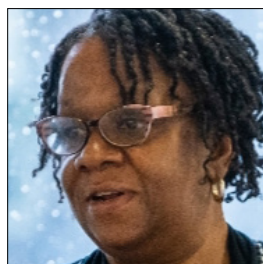
**Abigail Mensah (board)**  
community organisation  
member, founder of Ladies in  
Waiting CIC, an organisation  
that supports women in  
society



**Reza Razavi (board)**  
head of Division of Imaging  
Sciences and Biomedical  
Engineering, King's College  
London (representing King's  
College London)



**Ann-Marie Murtagh  
(board – deputy)**  
director of Research and  
Innovation (Delivery) and  
head of nursing for research  
at King's College Hospital



**Lana Samuels (board)**  
public research panel  
member



**Nick Sarson (executive)**  
communications co-lead,  
King's College London



**Jane Stafford (executive)**  
ARC South London associate  
director of operations



**Hilda Seleji-Paulo  
(executive)**  
senior finance manager,  
research and development  
finance, King's College  
Hospital NHS Foundation  
Trust



**Graham Thornicroft  
(executive)**  
professor of community  
psychiatry, King's College  
London (ARC South London  
director)