

NIHR ARC South London's Board

The Board is co-chaired by Dr Leonie Penna, chief medical officer, King's College Hospital NHS Foundation Trust and Dr John Byrne, chief medical officer at South West London Integrated Care System. It normally meets quarterly. The Board includes representatives from member and partner organisations, local groups and the public, and ARC South London's programme team.



Rachel Allen (executive)
director of the Institute for Medical & Biomedical Education, St George's, University of London (representing ARC South London's capacity building theme)



Mary Chambers (executive)
professor of mental health nursing, Kingston and St George's, University of London (representing ARC South London's patient and public involvement theme)



Sabrina Bajwah (board)
clinical senior lecturer, King's College London, and honorary consultant in palliative care, King's College Hospital NHS Foundation Trust



Rishi Das-Gupta (board)
chief executive, Health Innovation Network



Kate Blake (board)
director of research and development strategy, Guy's and St Thomas' NHS Foundation Trust (representing Guy's and St Thomas' NHS Foundation Trust)



Dr Toby Garrood (board)
joint CMO / medical director, South East London Integrated Care System



Dr John Byrne (board)
chief medical officer at South West London Integrated Care System and co-chair of the Board



Zoë Lelliott (board)
co-deputy director, NIHR ARC South London and director of King's Improvement Science



Ray Chaudhuri (board)
professor of movement disorders and neurology, King's College London and King's College Hospital NHS Foundation Trust, and diversity and inclusion representative



Michele Harris-Tafri (executive)
communications co-lead, King's College London



Dr Catherine Heffernan (board)
director of health improvement at Southwest London (SWL) Integrated Care Board & SWL public health consultant, South London Partnership



Rashmi Kumar (board)
chair of ARC South London's Involvement Advisory Group, public member, trustee of Lambeth Patients and Public Participation Group (PPG), actively engaging with Primary Care Networks



Irene Higginson (board)
professor of palliative care, King's College London and director of the Cicely Saunders Institute (ARC South London research about palliative and end of life care and representing King's College University Hospital NHS Foundation Trust)



Matthew Maddocks (board)
professor of health services research & rehabilitation, King's College London and co-deputy director, NIHR ARC South London



Jenny Higham (board)
principal, St George's, University of London and professor of obstetrics and gynaecology (representing St George's, University of London)



Abigail Mensah (board)
community organisation member, founder of Ladies in Waiting CIC, an organisation that supports women in society



Ruth Hutt (board)
director of public health, Lambeth Council



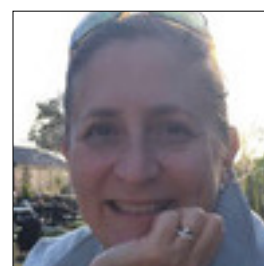
Ann-Marie Murtagh (board – deputy)
director of Research and Innovation (Delivery) and head of nursing for research at King's College Hospital



Richard Jennings (board)
Group chief medical officer, St George's University Hospitals NHS Foundation Trust



Josephine Ocloo (executive)
senior researcher in the Centre for Implementation Science at King's College London and the equality, diversity and inclusion Lead for the ARC South London.



Leonie Penna (board)
Chief medical officer, King's College Hospital NHS Foundation Trust (representing King's College Hospital NHS Foundation Trust) co-chair of the Board



Mariana Pinto da Costa (board)
consultant psychiatrist, South London and Maudsley NHS Foundation Trust (SLAM), and senior lecturer, King's College London



Nick Sarson (executive)
communications co-lead, King's College London



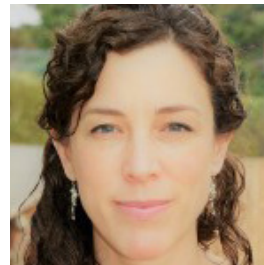
Beverley Randall (board)
community organisation member, programme manager at Mosaic Clubhouse, a mental health charity in Lambeth



Hilda Seleji-Paulo (executive)
senior finance manager, research and development finance, King's College Hospital NHS Foundation Trust



Reza Razavi (board)
head of Division of Imaging Sciences and Biomedical Engineering, King's College London (representing King's College London)



Jane Stafford (executive)
ARC South London associate director of operations



Lana Samuels (board)
public research panel member



Graham Thornicroft (executive)
professor of community psychiatry, King's College London and director, NIHR ARC South London