

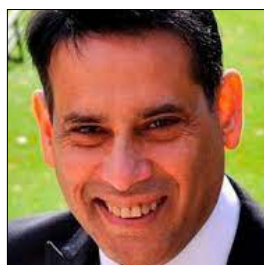
NIHR ARC South London's Executive

NIHR ARC South London is governed by an Executive, which is chaired by ARC director Professor Sir Graham Thornicroft. The Executive meets monthly, and includes representatives from our research and cross-cutting themes, and each of the collaborating organisations. The Executive is accountable to the ARC South London Board.

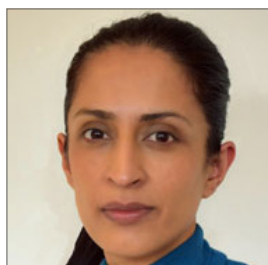
Members of the Executive:



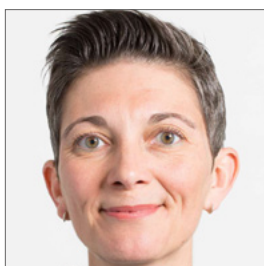
Rachel Allen
Capacity building lead,
director of the Institute for
Medical and Biomedical
Education, St George's,
University of London



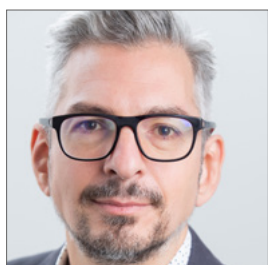
Ray Chaudhuri
King's College Hospital
representative (deputy),
equality, diversity and
inclusion representative
for the ARC South London
board, professor of
neurology / movement
disorders at King's College
Hospital and King's College
London



Sabrina Bajwah
Clinical senior lecturer,
King's College London and
honorary consultant in
palliative care



Natasha Curran
Implementation and
involvement lead, medical
director, Health Innovation
Network



Ioannis Bakolis
Economics and biostatistics
deputy lead, senior
lecturer in biostatistics and
epidemiology, King's College
London



Paolo Deluca
Alcohol research deputy
lead, reader in addiction
research, King's College
London



Mary Chambers
Patient and public
involvement research co-
lead, professor mental health
nursing, Director Centre for
Public Engagement, Kingston
University



Richard Dobson
Applied informatics, deputy
lead, professor of medical
bioinformatics, King's
College London



Colin Drummond
Alcohol research lead,
professor of addiction
psychiatry, King's College
London



Michele Harris-Tafri
Communications lead, ARC
South London, King's College
London



Abigail Easter
Maternity and perinatal
mental health theme,
deputy lead, senior lecturer
in maternal and newborn
health, King's College
London



Andy Healey
Economics and biostatistics
co-deputy lead, senior health
economist, King's College
London



Julia Forman
Children and young people
deputy lead, lecturer in
applied statistics and
epidemiology, King's Collge
London



Savi Hensman
Patient and public
involvement (PPI)
coordinator, ARC South
London, activist and writer



Fiona Gaughran
Applied informatics
lead, reader in
psychopharmacology and
physical health, King's
College London and director
of research and development
at South London and
Maudsley NHS Foundation
Trust



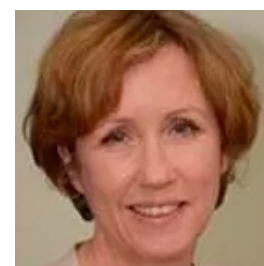
Irene Higginson
Palliative and end of life care
lead, professor of palliative
care, director of the Cicely
Saunders Institute, and
executive dean, Florence
Nightingale Faculty of
Nursing, Midwifery &
Palliative Care, King's
College London



Cilla Harries
Capacity building theme,
co-deputy lead, professor
of occupational therapy,
associate dean of research
and director of the Research
Centre at the Faculty of
Health, Social Care and
Education at Kingston
University & St George's,
University of London



Louise Hull
Implementation research
theme lead, deputy
director of the Centre for
Implementation Science,
King's College London



Fiona Jones
Implementation research
deputy lead, professor of
rehabilitation research,
St George's, University
of London and Kingston
University, and founder
and CEO of 'Bridges self-
management'



Rashmi Kumar

Public member, trustee of Lambeth Patients and Public Participation Group (PPG), actively engaging with Primary Care Networks



Ann-Marie Murtagh

Director of research and innovation, head of nursing, King's College Hospital, (King's College Hospital representative)



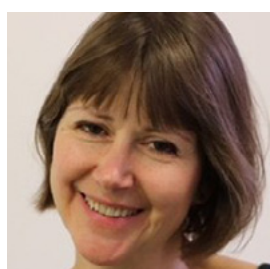
Sabine Landau

Economics and biostatistics lead, professor of biostatistics, King's College London



Caroline Norrie

Deputy theme lead, social care, research fellow, King's College London, NIHR Health & Social Care Workforce Research Unit/ NIHR School for Social Care Research



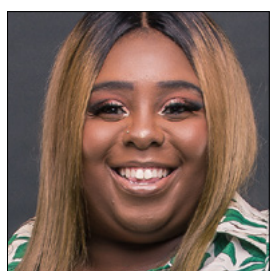
Zoë Lelliot

Deputy co-lead, ARC South London, and director of King's Improvement Science



Josephine Ocloo

Equality, diversity and inclusion (EDI) lead, ARC South London, senior researcher in the Centre for Implementation Science, King's College London



Abigail Mensah

Community organisation member, founder of Ladies in Waiting CIC, an organisation that supports women in society



Stan Papoulias

Patient and public involvement research deputy lead, research associate and assistant director of Service User Research Enterprise (SURE), King's College London



Matthew Maddocks

co-deputy director, NIHR ARC South London, and palliative and end of life care theme, deputy theme lead



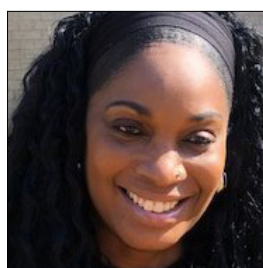
Mariana Pinto da Costa

Consultant psychiatrist, South London and Maudsley NHS Foundation Trust (SLAM), and senior lecturer, King's College London



Iain Marshall

Public health and multimorbidity deputy theme lead, clinical senior lecturer, King's College London



Beverley Randall

Community organisation member, programme manager at Mosaic Clubhouse, a mental health charity in Lambeth



Kritika Samsi
Social care theme lead,
research fellow, King's
College London



Robert Stewart
Informatics deputy lead,
professor of psychiatric
epidemiology and clinical
informatics, and leads clinical
and population informatics
in the Maudsley NIHR
Biomedical Research Centre



Jane Sandall
Maternity and perinatal
mental health lead,
professor of social science
and women's health, King's
College London, and head
of midwifery research,
NHS England and NHS
Improvement



Graham Thornicroft
Director ARC South London,
professor of community
psychiatry, King's College
London, and consultant
psychiatrist, South London
& Maudsley NHS Foundation
Trust



Lana Samuels
public research panel
member



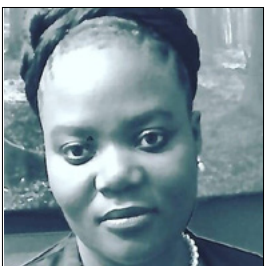
Tushna Vandrevalla
Capacity building co-deputy
lead, professor of health
psychology, Kingston
University



Nick Sarson
Communication lead, ARC
South London, King's College
London



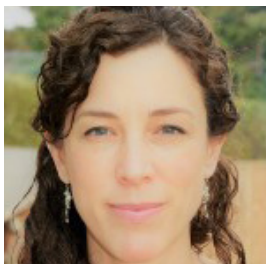
Andrew Walker
Implementation manager,
ARC South London,
head of evaluation and
implementation science,
Health Innovation Network



Hilda Seleji-Paulo
Senior finance manager,
research and development,
King's College Hospital NHS
Foundation Trust



Ingrid Wolfe
Children and young people
lead, Director Evelina
London Child Health
Partnership, consultant in
paediatric public health



Jane Stafford
Associate director of
operations, ARC South
London