

NIHR ARC South London's Board

The Board is co-chaired by Dr Leonie Penna, chief medical officer (King's College Hospital NHS Foundation Trust) and Dr Adrian McLachlan (Lambeth Clinical Commissioning Group). It normally meets quarterly. The Board includes representatives from member and partner organisations, local groups and the public, and ARC South London's programme team.

Members of the Board:



Rachel Allen (executive)
director of the Institute for Medical & Biomedical Education, St George's University of London (representing ARC South London's capacity building theme)



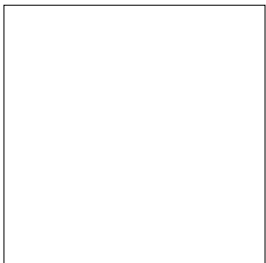
Rishi Das-Gupta (board)
Implementation and involvement co-lead, medical director, Health Innovation Network



Sabrina Bajwah
clinical senior lecturer, King's College London, and honorary consultant in palliative care, King's College Hospital NHS Foundation Trust



Zoe Lelliott (board)
deputy director, NIHR ARC South London



Kate Blake (board)
director of research and development strategy, Guy's and St Thomas' NHS Foundation Trust (representing Guy's and St Thomas' NHS Foundation Trust)



Michele Harris-Tafri (executive)
communications co-lead, King's College London



Ray Chaudhuri
diversity and inclusion representative, King's College Hospital NHS Foundation Trust



Irene Higginson (board)
professor of palliative care, King's College London and director of the Cicely Saunders Institute (ARC South London research about palliative and end of life care and representing King's College University Hospital NHS Foundation Trust)



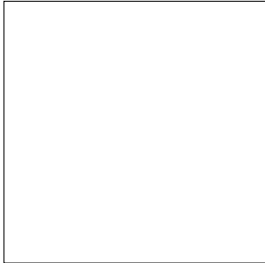
Mary Chambers (executive)
professor of mental health nursing, Kingston and St George's, University of London (representing ARC South London's patient and public involvement theme)



Jenny Higham (board)
principal, St George's,
University of London and
professor of obstetrics and
gynaecology (representing
St George's, University of
London)



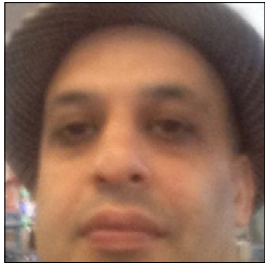
**Ann-Marie Murtagh
(board – deputy)**
director of Research and
Innovation (Delivery) and
head of nursing for research
at King's College Hospital



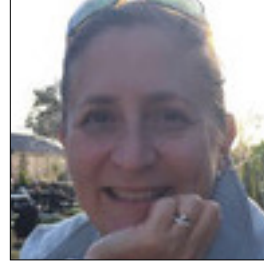
Ruth Hutt (partner)
director of public health,
Lambeth Council



Josephine Ocloo (executive)
senior researcher in the
Centre for Implementation
Science at King's College
London and is the Equality,
Diversity and Inclusion Lead
for the ARC South London.



Hameed Khan (board)
public member, chair of ARC
South London's Involvement
Advisory Group



Leonie Penna (board)
Chief medical officer,
King's College Hospital
NHS Foundation Trust
(representing King's College
Hospital NHS Foundation
Trust) co-chair of the Board
with Adrian McLachlan



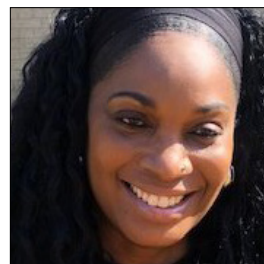
Rashmi Kumar (board)
public member, trustee of
Lambeth Patients and Public
Participation Group (PPG),
actively engaging with
Primary Care Networks



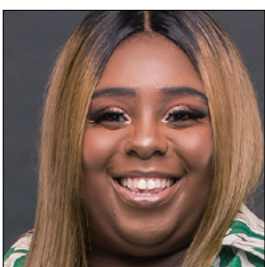
**Mariana Pinto da Costa
(board)**
consultant psychiatrist,
South London and Maudsley
NHS Foundation Trust
(SLAM), and senior lecturer,
King's College London



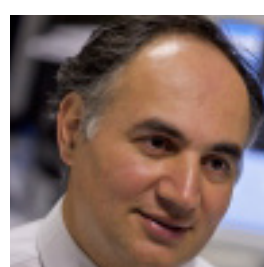
Adrian McLachlan (board)
GP clinical lead – Lambeth,
South East London
Integrated Care System
(co-chair of board with Julia
Wendon, and representing
clinical commissioning
groups in south-east London)



Beverley Randall (board)
community organisation
member, programme
manager at Mosaic
Clubhouse, a mental health
charity in Lambeth



Abigail Mensah (board)
Economics and biostatistics
co-lead, senior health
economist, King's College
London



Reza Razavi (board)
head of Division of Imaging
Sciences and Biomedical
Engineering, King's College
London (representing King's
College London)



Nick Sarson (executive)
communications co-lead,
King's College London



Jane Stafford (executive)
ARC South London associate
director of operations



**Hilda Seleji-Paulo
(executive)**
senior finance Manager,
R&D Finance, King's College
Hospital NHS Foundation
Trust



**Graham Thornicroft
(executive)**
professor of community
psychiatry, King's College
London (ARC South London
director) primary care, King's
College London



Nick Sevdalis (executive)
professor of implementation
science and patient safety,
King's College London (ARC
South London co-deputy
director)